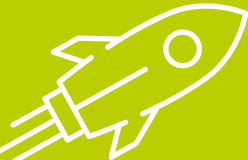


DRESDEN INTERNATIONAL SCHOOL
PARENT HANDBOOK



DRESDEN
INTERNATIONAL
SCHOOL

INSPIRE.

MOVE FORWARD.

GIVE BACK.

The DIS Mission Statement

We are a diverse community that empowers innovative and collaborative learning. As learners, we are prepared to be multifaceted, self-sufficient individuals who contribute to society.

Your Parent Handbook is a comprehensive introduction and guide to community life at Dresden International School. It reflects the experience of the school in answering the most important questions asked by our community.

This handbook is updated every year to reflect changes in policy and procedures at DIS. Should you have comments or additions, please direct these to marketing@dresden-is.de.

Address: **DRESDEN INTERNATIONAL SCHOOL**
Annenstr. 9, 01067 Dresden
Germany

Phone: +49 351 44007 0
Fax: +49 351 44007 23

Email: info@dresden-is.de
Website: www.dresden-is.de

Locations: **School Campus** (Grades K–12)
Annenstr. 9, 01067 Dresden

Preschool Campus (1–5 years)
Goetheallee 18, 01309 Dresden
Phone: +49 351 3125 416
Email: officeg18@dresden-is.de

Contents

Introduction	4
Welcome to the 2023/2024 School Year	4
About DIS	5
Contacts and Structure	5
Section 1: Whole School Information	8
School Locations	8
Parking at School Campus	8
Admissions	8
Educational Recommendation	9
Daily Routine at Preschool Campus	9
Daily Routine at School Campus	9
Attendance	10
Sign-out Procedure for Preschool and PYP students	10
Report Cards and Parent-Teacher-Student Conferences	11
Information Resources	11
Current Contact Details	12
Communication at DIS	12
Guidelines for the Use of Email	13
Emergency Communication	13
Rights and Responsibilities	14
Child Protection Policy	14
Parent Concerns	14
Parental Conduct	14
Student Code of Conduct	15
Student Behavior Expectations	15
Identity Cards	16
Languages	16
Meals	16
Electronic Equipment	17
BYOD – Bring Your Own Device	17
Books and Materials	17
Student Welfare and Safety	18
Smoking/Alcohol/Drugs	18
Lost Property	19
Field Trips	19
Lockers	19
Dress Code	19
Guests	19

Section 2: School Life	20
Student Leadership	20
Home Learning	20
Student Support Services	21
DIS Counseling Services	22
After School Care	23
Holiday Care Programme	23
School Libraries	24
Computers	24
Physical Education (PE)	24
PE Uniforms	24
Athletics Programmes	25
Co-Curricular Activities	25
Section 3: Parent Involvement at DIS	26
Parent Council	26
Fundraising Association	26
Community Network Facebook Group	26
Volunteers and Parent Partnership	26
Community Room - Parent Library	26

Introduction

Welcome to the 2023/2024 School Year

Dear DIS Families,

Welcome to the 2023/24 School Year! As we embark on this academic journey together, I wanted to take a moment to express our gratitude for entrusting us with your child's education and to emphasize the pivotal role you play as partners in their learning and well-being.

At DIS, we firmly believe that education is a collaborative effort between teachers, students, and parents. This is consistently affirmed with research on home-school partnerships. Your involvement and support are crucial in fostering a positive and enriching learning environment. We encourage open lines of communication and invite you to actively participate in your child's education. Whether it's attending parent-teacher meetings, volunteering for school events, or engaging in conversations about their progress, your presence makes a significant difference.

At home, you also play a vital role in supporting student success. From developing your child's habits and routines to nurturing their passions and curiosities, your daily acts of parenting shape your child into the young person they become. You also model and reiterate the importance of acting in alignment with our school's values: open-mindedness, compassion, commitment and integrity. It is in this spirit that I invite you to read our Parent Handbook. It is an act of participation and partnership in your child's learning.

Please look out for opportunities for collaboration over the school year. Your perspectives are highly valued. I look forward to connecting personally with each of you soon.

Best wishes,
Carla Marschall – Director/CEO

THE DIS VISION

Inspire. Move forward. Give back.

THE DIS MISSION

We are a diverse community that empowers innovative and collaborative learning. As learners, we are prepared to be multifaceted, self-sufficient individuals who contribute to society.

THE DIS VALUES

Commitment
Open-mindedness
Compassion
Integrity

About DIS

Dresden International School (DIS) provides childcare and an international education from one-year-olds up to Grade 12. DIS operates as a limited liability company (gGmbH as a German acronym) and is financed through school fees, donations, and public subsidies. DIS was founded in 1996 by government and community leaders from Dresden and the Free State of Saxony to further the economic development and international investment in the Dresden region and to contribute to intercultural understanding in Saxony.

Our 500 students represent over 50 different nationalities from the ages of 1 to 18. DIS qualified as an IB World School in 2002. In June 2009, we received full accreditation status from CIS (Council of International Schools) and NEASC (New England Association of Schools and Colleges). This recognizes our high standards of professional performance in international education and our commitment to continuing improvement. The DIS has „Ersatzschule“ status up to and including Grade 4 and „Ergänzungsschul“ status in Grades 5 through 12 and can, if desired, provide an educational recommendation (Bildungsempfehlung) for a secondary education pathway at a German „Oberschule“ or „Gymnasium“.

In Preschool through Grade 5, DIS implements the Primary Years Programme (PYP), an inquiry-based curriculum framework of international education. In Grades 6–10 students follow the IB Middle Years Programme (MYP) and in Grades 11 and 12, the IB Diploma Programme (DP).

The IB Diploma is recognized for university entrance worldwide, including in Germany. Students who wish to study in Germany may select courses for its recognition as *Abitur* (*Hochschulzugangsberechtigung*) by the *Kultusministerium*. Besides these graduation certificates, students can also receive the DIS High School Diploma at the end of Grade 12. The MYP Certificate can be received at the end of Grade 10, which is recognized as *Realschulabschluss*.

Contacts and Structure

The school organization of the Dresden International School is headed by the shareholder board of the DIS Dresden International School gGmbH. The extended management team of the company comprises the Director/CEO and Business Manager/CFO.

The sole shareholder is the association "Internationale Schule Dresden e. V.", represented by following members for the 2023/2024 school year:

Chairman:	Prof. Constanze Geiert
Treasurer:	Ralf Stölzel
Board members:	Prof. Dr. Michael Beitelschmidt, Prof. Dr. Anne Grapin-Botton, Jens Heider

More information about the function and responsibilities of the Board can be found on the school website (under 'Governance'). The school's management team represents the Board in all day-to-day school and operational matters.

The DIS management board and administration are responsible for the day-to-day operation of the school and support the work of the teaching staff. As with teaching faculty, these members of the school staff can be contacted directly.

School Administration

Position	Name	Email address and telephone number
Director/ CEO	Carla Marschall	cmarschall@dresden-is.de 44007 0
Business Manager/ CFO	Andrea Harnisch	aharnisch@dresden-is.de 44007 14
Facilities Manager	Luise Heyne	lheyne@dresden-is.de 44007 29
Admissions Coordinator/ Assistant to Director	Katrin Schreiber	kschreiber@dresden-is.de 44007 16
Marketing	Elise Groeneveld	egroeneveld@dresden-is.de 44007 28
Development / Public Relations	Konstanze Kirsch	kkirsch@dresden-is.de 44007 24
IT-Manager	Dr. Dmitry Labanov	dlabanov@dresden-is.de 44007 216
Reception School Campus	Berit Großer	bgrosser@dresden-is.de 44007 0
Accountant	Tommy Glaser	tglaser@dresden-is.de 44007 13

Preschool

Position	Name	Email address and telephone number
Preschool Principal/Deputy Director	Chris Boreham	cboreham@dresden-is.de 44007 19
Preschool Coordinator/ Assistant Principal	Joyce Larson	jl Larson@dresden-is.de 312 54 16
Office Assistant	Wilma de Haas	wdehaas@dresden-is.de 312 54 16

Primary School

Position	Name	Email address and telephone number
Primary Principal/Deputy Director	Chris Boreham	cboreham@dresden-is.de 44007 19
Primary School Office Assistant	Antonella Arvanitis-Dunkel	aarvanitis-dunkel@dresden-is.de 44007 20
PYP Coordinator/ Assistant Principal	Kim Aguirre	kaguirre@dresden-is.de 44007 20
PYP Co-Curricular Coordinator	Silke Wegehaupt	swegehaupt@dresden-is.de 44007 0
Counselor	Dr. Elaine Dolan	edolan@dresden-is.de 44007 0

Secondary School

Position	Name	Email address and telephone number
Secondary Principal	Ana Gonçalves	agoncalves@dresden-is.de 44007 27
Secondary School Office Assistant	Grit Stasik	gstasik@dresden-is.de 44007 27
MYP Coordinator/ Assistant Principal	Flora Mather	fmather@dresden-is.de 44007 0
Director of Studies Grades 11 and 12/Assistant Principal	Wendy Bassam-Coles	wbassam-coles@dresden-is.de 44007 12
Asst. to DP Coordinator/Student Services Technician/ German University Counselor	Antje Kratina	akratina@dresden-is.de 44007 26
Athletic Director & MYP/DP Co- Curricular Coordinator	Tesha Harry	tharry@dresden-is.de 44007 0
Careers Counselor	Harold Beck	hbeck@dresden-is.de 44007 0
Counselor	Eleanor Wallace	ewallace@dresden-is.de 44007 22

Section 1: Whole School Information

School Locations

School Campus: Students in K5 and Grades 1 to 12 attend school at the School Campus, Annenstrasse 9, in Dresden-Altstadt. At the School Campus, you will find a renovated school building housing most of the Secondary School and administration, a purpose-built building housing the Primary School, libraries, and cafeteria, and a sports hall. The School Campus site is easily reached by a five-minute walk from the Postplatz tram and bus stop area. Younger students should be brought to school and picked up. Many parents arrange to carpool to the School Campus as parking is limited. Please park outside of the school property. Written permission from parents is required for all students Grade 5 and younger, who use public transportation to and from school without an accompanying adult. Students may also ride their bikes to school. Bicycle stands are available on the school grounds.

Preschool Campus: The Preschool (ages 1–5) is housed in the villa at the Preschool Campus, Goetheallee 18 (G18), in Dresden-Blasewitz. It is convenient to reach the Goetheallee site by taking tram numbers 12 or 6, exiting at Lene-Glatzer-Strasse, then taking a five-minute walk through the Waldpark.

Parking at School Campus

The parking opportunities close to the School Campus are very limited. We recommend using public transportation or cycling if possible. The closest tram and bus stops to the school are ‚Postplatz‘ and ‚Schwimmhalle Freiburger Platz‘. If you drive your child to school, please use the DIS drop-off zone in front of the school to stop and drop off your child. Please be aware that this is a drive-through lane, not a parking zone. Make sure to pull forward so other cars can pull in behind you and off the street. The parking spots clearly marked with ‚DIS‘ on the left in the drop-off zone may be used for brief parking whilst dropping off or picking up your child.

To avoid receiving parking tickets when parked in front of the School Campus, the school is offering a special parking shield. The parking shield needs to be set with the time of arrival to inform the parking attendant. Parents can get their parking shield at the School Campus reception for a € 2 nominal charge. The parking shield does not allow you to park for an unlimited period of time and will not prevent you from getting a parking ticket if you have been parked for more than 15 minutes. Please be aware that DIS will not reimburse parking penalties.

Admissions

The application takes place online (<https://www.dresden-is.de/en/join/learn-at-dis/admissions>) or in paper format. Please contact the Admissions Coordinator at admissions@dresden-is.de regarding the application process. It is important to note that prior to the formal offer of admittance to the school, parents and children meet with a school leader to discuss the prospects of the child achieving success in his/her academic studies at DIS. At these meetings:

- All previous school records are reviewed in order to agree upon the correct placement for your child.
- Any specific assessments, support or enrichment programmes required are planned.

Parents must submit all relevant documents online such as report cards from at least the last two years of the student’s education, plus reports from the current school as well as a picture of the student, health information. No applications will be decided upon until a review of the marks has been completed. Grade 6–12 applicants take an entrance test in Mathematics, English, and German if the student has German language knowledge. A conditional placement is agreed

upon if needed. The final decision on admittance and placement rests with the Principals and Director.

Re-enrolment for the new School Year

Re-enrolment begins with a survey in February; families are requested to advise the school whether or not they plan on returning the following school year. When a student plans to leave DIS, parents should inform the Admissions Coordinator in writing at least two months prior to the withdrawal of the student (see child care contract or school contract).

In addition, the payment of school fees and the return of locker keys and books is required to receive records, report cards and certificates.

Educational Recommendation

At Dresden International School, an educational recommendation for the German Oberschule/Gymnasium is provided in Grade 4 only at the specific request of parents. Individual student counseling sessions are held in Grades 3 and 4 prior to the issuance of the educational recommendation. The PYP German team will contact parents and inform them about the possibility of receiving an educational recommendation. Students do not need an educational recommendation to remain at DIS after Grade 4.

The educational recommendation can only be given to students whose German level is high enough to participate in our GLAL (German Language and Literature) class. Due to the requirements of the State Office of School and Education (LaSuB), students of the GLA class (German Language Acquisition) do not receive an educational recommendation. They must first attend a preparatory class at an Oberschule when transferring to the German school system in order to improve their German language skills to the point where they can be fully integrated into all classes at a German school.

Daily Routine at Preschool Campus

Students who arrive at Preschool between 7:30 and 8:00 attend Morning Care, supervised by a class teacher. There is a Morning Care room upstairs for PK3/4 children, and one room of the Bumblebees' suite is used for Morning Care for PK1 and PK2 children. After 8:00, the children go directly to their classrooms. Morning circle time usually starts at 9:00.

Daily Routine at School Campus

Students of all ages are expected to be in school on time and be prepared for their school day.

Primary School

Kindergarten (K5)	Morning Care:	7:30 – 8:20
	Lessons:	8:20 – 15:15, on Tuesdays 8:20 – 14:30
	After School Care:	15:15 – 18:00, on Tuesdays 14:30 – 18:00
PYP (Grades 1-5)	Morning Care:	7:00 – 8:20, on Wednesdays until 8:40
	Lessons:	Mon, Thu, Fri 8:20 – 15:15
		Tue 8:20 – 14:30
		Wed 8:40 – 15:15
	After School Care:	Available until 18:00

Secondary School

In MYP and DP (Grades 6–12), school operates on a 10-day schedule, from Monday through Friday with lessons that are 60 minutes in length. Classes for MYP and DP students start at 8:30 and finish at the latest by 15:45. Co-curricular activities continue until 16:30 and later.

Attendance

Regular and punctual attendance is essential for students from Preschool to Grade 12. The school keeps detailed records of attendance. The school is responsible for the welfare of a student from the start to the end of the school day while that student is registered as 'present' on our premises. Absences from school must always be explained in writing by a parent or guardian. Teachers maintain a register of student attendance and lates in their classes and these records are indicated in school reports and school transfer documents.

Requests for leave of absence outside the normal holiday time should be obtained from the appropriate Principal five days in advance. Parents should not plan holidays during school time. Forms to apply for student leave are available in the school offices and online (<https://www.dresden-is.de/cdn/pdf/Learn/PYP/Primary-Student-Leave-ENG.pdf>). The Principal requires that the student obtain comments from teachers about the impact of the absence to be taken into consideration before the request can be granted.

For students who are absent because of illness or other unplanned reasons, parents must notify the School Campus Reception of their absence by 9:00 (reception@dresden-is.de), the Preschool Office (officeq18@dresden-is.de) or use the [online form](#). As a guideline, the maximum period of absence, for any reason, considered acceptable in any one year should not exceed 26 school days (85% attendance).

K5 and PYP students who arrive late to school must first check in at the Reception office before reporting to class. The teachers record attendance electronically, but only the Reception office may change the note from "absent" to "late". When a parent picks up a child early from school, they must notify staff at the Reception office.

Only students in Grades 11 and 12 are permitted to leave the premises without special permission and then only in the lunch hour. This privilege will be granted by the Principal upon receiving a letter of approval from the parent or guardian. The students will be expected to sign in and out.

Sign-out Procedure for Preschool and PYP students

Preschool Parents are welcome to pick up their children as soon as afternoon classes finish at 15:20 (14:20 on Tuesdays). After School Care (ASC) at G18, available until 18:00, is free of charge. When picking up your child, whether from the classroom or after-school supervised care, it is important to check your child out by giving his/her ASC card directly to an ASC staff member on duty.

PYP The school day ends at 15:15 (14:30 on Tuesdays) and PYP students are dismissed to go home, join After School Care (ASC) activities or co-curricular activities. Children will join ASC either on the playground or at one of the activities. All children who are leaving need to sign-out with an ASC staff member. Children who do not have permission to leave alone must be checked out by their parent or guardian, or a designated pick-up person previously given to the school in written permission. Students are not allowed to independently check themselves out and then check back in. Once they have checked out, they need to go directly home.

Report Cards and Student-Parent-Teacher Conferences

It is important that students are aware that to receive report cards, all books and supplies (e.g. sport uniforms) must be returned to school.

Preschool For the 3- to 5-year-olds, written report cards are issued twice per year: in February and June.

The first Parent-Teacher-Student conference is scheduled just before the first day of school in August. Parent conferences are held in the late fall and early spring.

If you need to meet with your child's teacher at other times, please make an appointment. Student-Led Portfolio conferences are held in late spring.

Primary For K5 through Grade 5, written report cards are issued twice per year: in February and June. Grades are not awarded in report cards up to Grade 5.

Primary Parent conferences are scheduled in October, prior to the fall break. Students and parents also participate mid-year in Three Way conferences and at the end of the year in a Student-Led conference. If you need to meet with your child's teacher at other times, please make an appointment.

Secondary In the Secondary School, report cards are issued twice per year, one at the end of each of the two semesters. Parents have the opportunity to check grades at any time during the semester in Managebac. Opportunities for Student-Parent-Teacher conferences are scheduled every semester. Students and parents are also expected to participate in Student-Led Portfolio-based conferences with their child's advisory teacher.

Information Resources

There are many formal and informal ways for members of the DIS community to communicate with one another. In all communications, parties are asked to use existing and appropriate channels.

School Website	<p>This is the most important source of information for anyone involved or interested in the Dresden International School. The website, www.dresden-is.de, is an overview of the school for the general public. It answers basic questions about DIS and contains programme and admissions information as well as community news.</p> <p>Parents will also find information for families, including a calendar of events and holidays, menus, parent handbook, and detailed information about co-curricular activities and events.</p>
Preschool/ Primary Communication	<p>Preschool teachers document the week's learning with a short summary on Seesaw. We also use Seesaw to send messages to parents and as an information resource from the teachers to the parents.</p> <p>K5 to Grade 5 students have an online portfolio via Seesaw. Teachers and students update this learning journal regularly. Teachers post a weekly message outlining the learning that has occurred and includes any important information and updates.</p>
DIS News & Notes	<p>The newsletter is distributed regularly (except during [bank] holidays) via email to families who have signed up for it. The DIS News & Notes gives an overview of the past week's happenings and information about upcoming</p>

<p>Facebook/ Instagram</p>	<p>events and areas of interest. It also informs parents of special school activities such as meetings, mission, vision, performance, and community happenings.</p> <p>If DIS community members would like to submit an item for inclusion, please contact the newsletter team (disnewsletter@dresden-is.de)</p> <p>If you want to sign up for the newsletter, please send an email to disnewsletter@dresden-is.de.</p>
	<p>Are you following us on Facebook and Instagram? If not, here's what you could be missing: In addition to school news and updates, you too can be a part of the conversation. Add your voice on various topics. Tell us what topics you'd like us to cover in the future. Head on over to our Facebook page (https://www.facebook.com/DresdenInternationalSchool) and click the "like" button.</p> <p>Follow us on Instagram at https://www.instagram.com/dresden.international.school/</p> <p>Share your thoughts and experiences with other people. Stay informed.</p> <p>While we welcome your comments through our social media channels, for your safety and security please do not post confidential or sensitive information.</p>
<p>School Monitors</p>	<p>The DIS School Campus has TV monitors on each floor of both school buildings, and the sports hall, where upcoming events, projects, news and information can be found.</p>
<p>Assemblies</p>	<p>Assemblies serve a number of purposes including building school spirit, showcasing talents, educating students, celebrating holidays, and distributing awards, just to name a few. Parents are welcome to attend.</p> <p>Primary assemblies take place on a regular basis. Secondary assemblies take place during extended advisories. Awards assemblies are held once a semester.</p>

Current Contact Details

Parents are asked to keep DIS informed of any changes to family contact information by contacting the Admissions Office at admissions@dresden-is.de. It is necessary for the functioning of the school and for emergencies to have up-to-date contact and address information.

Communication at DIS

Direct communication is the most effective way for parents to handle a concern about their child's academic programme. The process of direct communication requires that parents approach the person most closely connected to resolving the concern, which, with most academic issues, is the teacher.

All DIS staff naturally welcome feedback from parents, and teachers regularly make themselves available to deal with parental concerns and questions. It is helpful for parents to schedule an appointment by contacting the teacher directly and requesting an appointment by email. The

address is their first initial and last name followed by @dresden-is.de. For example, Carla Marschall can be emailed using cmarschall@dresden-is.de. Appointments may also be scheduled by contacting the Office Assistant to your child's Principal.

It is essential that parents speak directly with teachers, especially the appropriate teacher advisor and class teacher, if there are concerns about the progress of their child/ren.

If the parent and the teacher cannot agree upon a resolution, or if the agreed-upon actions are not effective, parents should then bring the issue to the attention of the division Principal, then if necessary, to the Director. This process not only provides the most direct route to resolving a problem, it also opens up the all-important communication channel between parent and teacher.

It is not appropriate for a parent to communicate for and on behalf of any parent.

In the Secondary School the communication chart below should be followed.

Nature of Issue	Curriculum	Social/Emotional
Stage 1	Subject teacher	Advisory teacher
Stage 2	Head of Department	Assistant Principal MYP or DP
Stage 3	MYP or DP Coordinator	Secondary Principal
Stage 4	Secondary Principal	Director

Guidelines for the Use of Emails

DIS recognizes the need for clear communication channels between the various stakeholders of our school community. With very few exceptions email practices at DIS are very good but occasionally misunderstandings and errors can occur, and this is something we wish to avoid. For parents, we have developed the following guidelines in the use of any email communication between school and home.

- Emails can be used to inform the teachers of something that happened at home or ask questions that require only a brief answer. Any dialogue relating to student progress is better addressed in a face-to-face meeting or phone call between parent and teacher.
- If there are issues that require a discussion or a longer explanation, it will be necessary to arrange an appointment with the teacher.
- Teacher schedules may not allow answering emails immediately. But we will endeavor to acknowledge receipt within 24 hours if it is anticipated that a response is not feasible within 48–72h. Please do not expect an exchange of email communication with teachers after working hours or at weekends.
- Any urgent issues that need to be dealt with the same day need to be communicated via the secretaries.
- Any communication by e-mail between home and school should always be polite, friendly and respectful and in accordance with our school values.
- The cc function should only be used when considered absolutely necessary to avoid over communication and sending the wrong signal to the main recipient.

Emergency Communication

An emergency and/or crisis communication plan is in place at DIS as, during times of crisis, it is natural to want information as quickly as possible. DIS provides its community with the maximum amount of information that is possible and appropriate depending upon the kind of emergency and other constraints (i.e. legal dictates, security, emotional well-being of those involved). The

safety and security of all children at DIS are the school's top priorities and all actions taken will reflect this.

Should such an event take place, parents will be informed via one of the following methods:

- SMS:** when immediate action is necessary
- Email:** when families need to be informed within one day's notice
- Newsletter:** regarding an issue, which involves security, but does not directly influence the running of the school

Rights and Responsibilities

Each student, parent, staff member, and Board of Directors member in our school community has the right to be treated with respect, courtesy, and consideration by all other students, parents, staff, and Board of Directors members. As an IB World School, our community members are compelled to act towards others as internationally-minded citizens. Our expectation is that all members of the community model the school values of compassion, commitment, integrity and open-mindedness.

Child Protection Policy

Dresden International School aims to provide an environment in which students are safe from abuse and in which any suspicion of abuse is dealt with in a prompt, appropriate and competent manner, and according to Federal German Law.

If a child protection issue arises, the reporting of this must be evaluated and attempts should be made to address risks to the child. If the school finds out about a child abuse case and there are not sufficient resources available or the parents refuse necessary help then the Child and Youth Welfare Authority (*Jugendamt*) must be called upon.

This Child Protection Policy (on DIS website under 'Student Support Service') is applicable to all adults interacting, involved and working with any child at DIS, including but not limited to parents, guardians, other family members, teachers, coaches, volunteers, interns, assistants, school leadership, board members and office staff. All employees and volunteers must be familiar with and adhere to the Child Protection Policy and Procedures handbook in work-related activities.

Parent Concerns

A parent or guardian with a concern, complaint or grievance about any school matter should always first approach the staff member(s) directly involved or concerned in order to resolve the matter. If an acceptable solution cannot be found, the next level e.g. Principal, should be presented with all the facts in an open manner, continuing up to the Director if necessary. If the Director deems it necessary, s/he will request a written statement and consult all parties involved. The decision of the Director shall be final.

Parental Conduct

DIS is a safe and supportive community, where relationships between staff and with other adult members of the community, especially parents, must demonstrate mutual respect and a recognition of shared responsibility for student welfare and educational progress. Parental involvement is an important factor in educational success and in dealing with emerging issues with child's learning at an early stage.

In cases of parental involvement, unacceptable behavior by any parent towards staff will be confronted and challenged. The DIS Executive Board is responsible for ensuring the health and safety of school staff and students in an environment of trust, care and respect.

Unacceptable behavior includes but is not limited to threatening or actual physical violence, intimidation, unwarranted verbal or written threats, shouting, swearing or inappropriate emails and the circulation of malicious rumor in the community.

Any communication by email between home and school should always be friendly and respectful. Inappropriate email exchanges include negative emotional responses, personal criticism, threats and unsupported claims which cause distress to the employee.

Where such behavior does occur, school staff know that their employer will play a proactive role in taking all possible action to deal with it. These include the following stepped sanctions which will be applied according to the severity of the incident:

1. A school meeting with the parent/guardian, staff member in the presence of a school leader to resolve the issue in a mutually respectful and constructive manner.
2. A written warning to the parent from the Principal after investigation of the incident
3. Referral to the Director which may result in measures which address the specific action.
4. Referral to the Director which may result in expulsion of the student from the school as a final resort.

Advice and support are given to DIS staff on procedures to follow in dealing with such incidents at any stage required in dealing with parents.

Student Code of Conduct

In the Preschool and Primary School, the student Code of Conduct is: Be safe. Be fair. Be respectful. In the Secondary School the student code of conduct is modelled on principles of Positive Education and Restorative practices.

All DIS students are expected to adhere to the DIS Student Code of Conduct. It is based on the principle of respecting the rights of other students to be able to learn without interference. Students are expected to interact in a respectful and friendly way with their fellow students, their teachers, and all other school staff and visitors to the school. When outside on the school grounds, students are expected to show respect and care for their surroundings.

Students are not to leave the school grounds without parental permission and the agreement of the school office. Only Grade 11 and 12 students may leave the school grounds during lunch breaks and must sign out.

Parents of MYP and DP students are referred to the appropriate section in their child's student planner where the details of the Student Code of Conduct are written.

Student Behavior Expectations

The goal of school behavior guidelines is to support students in understanding how to act responsibly and to resolve his/her problems effectively. Staff shall enforce behavior rules and procedures fairly and consistently amongst all students.

Each teacher will take responsibility for general classroom management by setting expectations, modelling correct behavior, rewarding good behavior, counseling the student, applying consequences fairly when this is considered effective.

When a student continues to act inappropriately and the classroom teacher has exhausted classroom management options, or when a single action by a student is sufficiently severe, the student will be referred to the Head of Department or Assistant Principal.

Expulsion from School

For repeated or severe infractions against school rules, a student may be expelled from the school as a final measure. Decisions on expulsion will be made at the discretion of the Director.

Identity Cards

All parents are required to wear their DIS ID cards when entering the building and while staying on the School Campus. This enables us to ensure that all adults on campus are known to the school and have permission to be there. All parents will receive their ID cards at the first back-to-school parent evenings at the beginning of the school year 2023-24. The ID card and lanyard will be free of charge. Replacement cards cost €10. Cards for extended members of the family who regularly pick up children, e.g. a grandparent, can also be purchased for €10. Parents whose child is transferring to DIS during the school year will receive their ID cards when their child starts school. Staff members will be checking that all parents are wearing their ID cards when coming onto campus.

Visitors who do not have their own DIS ID cards or parents who do not wear their DIS ID card must wear a Visitor ID. In this case you have to sign in at the front desk, take a visitor card and wear it while you are on campus.

Languages

The Preschool programme is based on structured play and inquiry with English and German as the languages of instruction, and children are immersed in both languages as everyday languages of conversation and activity. Our school teachers are fluent in English and many are fluent in German.

The main language of instruction and the language of conversation in PYP, MYP, and DP classrooms is English. There are classes for German as a first or second language from age six onwards. Spanish is taught as an additional language in MYP Grades 6 to 10 and as an option in the DP. Mother-tongue language classes can also be coordinated for those who choose to. This is based on tutor availability and is funded by the parents. Students whose first language is not English are supported through our English as an Additional Language Support (EAL) programme until they are ready to learn independently in English.

Meals

Preschool and the School Campuses are nut-free, which means children and adults must not bring any food onto campus with nuts or foods with nut products listed in the ingredients. It is important to respect this restriction because we have several students with severe allergies.

Every student has the option to register with Gourmetta, our food service provider.

Preschool Campus Gourmetta catering service provides one menu daily for Preschool-children aged 1–5. A meal costs € 4.39.

In the Preschool classes, parents sign up for a week at a time to bring healthy food for morning and afternoon snacks prepared by the teachers.

Students who stay after 16:00 need to bring an individual healthy snack for late afternoon.

School Campus There are two food breaks during the school day, morning snack and lunch. At the School Campus, from kindergarten up, each child may bring a healthy snack to school.

K5 students as well as students in Grades 1–12 can choose between three different dishes. Meals or components are prepared fresh on campus. Every meal includes a fresh salad or a dessert. Students can choose the individual components. Lunch costs are between € 3.95 and € 4.86 per meal. Menus are available on the school's website (www.dresden-is.de under 'Lunch' in each school division).

Note: Meals must be ordered in advance (at least by 8:00 on the day) and paid by debit. This can be done by email (bestellung@gourmetta.de), online (www.gourmetta.de), or at the School Campus Terminal. It is not possible to pay cash. Cancellations are possible every day until 8:00 by contacting Gourmetta directly via phone (0351 3127 117) or via Fax (0351 3127 118).

Electronic Equipment

Preschool/ PYP No personal electronic equipment may be used in class or during school sponsored activities. Mobile phones must be kept in lockers during the school day. Smart watches and similar devices should be in airplane mode throughout classes. The school is not responsible for loss or damage to personal electronic equipment.

MYP/DP Phones must be kept locked away during the school day, and should not be used during school hours, unless the teacher allows the use for educational purposes. Smart watches and similar devices should be in airplane mode throughout classes. The school is not responsible for loss or damage to personal electronic equipment.

The telephone in the school office is for school business only and for students only in urgent matters. Students should not plan on using the school phone for personal communication.

BYOD – Bring Your Own Device

Students are expected to bring their own computer device everyday as part of their required school supplies from Grade 6 onwards. Their device will serve as one of many learning tools that teachers and students will be utilizing on a day-to-day basis.

The BYOD Programme is intended to provide balanced and meaningful use of technology integrated by teachers throughout student academic curriculum. This will facilitate our learners to develop essential 21st century technology and digital citizenship skills needed in today's world.

We recommend the use of Chromebooks in the school. Any Chromebook less than three years old is suitable. We will also be able to support Windows 10 and MacOSX Mojave and higher. All devices must have the Chrome Browser installed. The latest version of the browser can be downloaded at: <https://www.google.com/chrome/>.

Books and Materials

Students are expected to be responsible for personal and school materials. All textbooks remain the property of DIS; they are loaned to students who must pay for replacement of lost text and library books.

In Primary School, some stationery and school materials are organized by the school. Some books are consumable, meaning children write in the book and they take it home at the end of the school year.

In Secondary School students are responsible for providing their own pens, binders, and other stationery as required from Grade 6. Literary works are invoiced to students.

Student Welfare and Safety

All parents must ensure that the school office has an updated student health information sheet. If your child should contract a communicable disease, please notify the school. We will inform other parents of any relevant exposure risks.

Please call the school office (see Structure and Contacts), Preschool or School Campus, and leave a message by latest 9:00 or send a note to reception@dresden-is.de if your child is sick.

If we have not received any notification about your child's absence, we will have to contact you.

For Primary and Secondary students, a doctor's note is compulsory when the student is absent for three days or longer. A doctor's note is essential on the first day of absence if absence coincides with a summative assessment.

In case your child is sick due to a virus/contagious disease (such as Covid, whooping cough, measles, mumps, rubella, scarlet fever, lice, etc.), you must inform the school. We have to report these illnesses to the state health office. In addition, there has to be an announcement to the school community so that parents are notified. A doctor must give approval that the child can go back to school. In special cases, the school can require a written note from the doctor. Should a child become ill at school, parents will be notified by telephone.

If children are found to have head lice, they should be kept home for treatment until the prescribed treatment has been concluded and deemed effective. Parents are obligated to check their child's head for lice regularly, especially after holidays.

The staff will deal with minor accidents, and parents will be notified if necessary. If a child needs to go to the hospital, we will telephone parents and inform them to which hospital the child has been taken. If parents are not available, we will telephone the emergency contact. If an accident should occur on an excursion away from school, we will follow the same procedure.

Please notify the school office immediately with any changes in contact information.

Due to the guidelines of the Saxony Ministry of Culture, there is no legal requirement for our staff members to give out medication to students. Exceptions to this guideline are possible, e.g. in cases of chronic illnesses. In such cases, the following requirements are expected from parents:

- Receipt of a written parental agreement
- Receipt of a medical prescription of the doctor indicating the name and dosage
- Agreement by the school that the student is not able to take the medication by him/herself

In general, the guideline of the Saxony Ministry of Culture of December 2016 is obligatory. Please contact the school office for more information.

At DIS Fire Drills and Harbor-in-Place Drills are carried out periodically each year.

Smoking/Alcohol/Drugs

Student smoking, drinking alcohol and taking of any drugs is not permitted on or near school premises or during school-sponsored study trips or events. Students found doing so will face consequences in accordance with the Student Code of Conduct. Our School Campus is also a non-smoking zone for all adults.

Lost Property

Lost items which are found on one of the School Campuses are taken to a “Lost and Found Box” in each building. Please check the box when you have lost something. Periodically throughout the school year, items that have not been claimed will be donated to charity.

Students are strongly encouraged to leave valuables that are not needed for educational purposes at home. Students may use personal laptops, but must take care to ensure their security at all times and to use them according to the DIS Computer and IT Use Policies, which is available at the student portal and with the Admissions Coordinator.

Field Trips

Field trips will be announced in advance. Parents are asked to give their permission for their child to participate after being informed of the particular field trip. Overnight study trips will require payment by parents towards the cost of the excursion.

Day trips within Dresden	DIS pays 100% of the entrance and registration costs Parents pay 100% of the transportation costs
Sports trips	Parents pay 100% of the total costs
Overnight trips	Parents pay 100% of the total costs for the trip, for mandatory trips up to € 575 at maximum.

Lockers

Every student from Grade 1 to Grade 12 will be given a locker in which they can keep personal belongings while they are at school. Younger students in PYP are given a personal locker which does not require a key.

Dress Code

With the belief that proper dress is integral and conducive to a learning environment, we require that students wear appropriate, non-distracting, inoffensive clothing. Slogans and logos on clothing must not include vulgarity or references to drugs or alcohol.

All students from K5 through Grade 2 need indoor and outdoor shoes. For Grades 3 to 5 the use of indoor shoes is a choice to be made with the Homeroom teacher and students in the class.

Guests

Guests are welcome to visit our school. They will need to register with the school office in advance or upon their arrival. If parents need to meet with a teacher, an appointment is necessary. Guests proceeding further into the school must sign in and wear a visitor badge.

Former DIS students who wish to visit are encouraged to plan their visit during breaks or after school. To attend classes with their former classmates, students need permission from the school principal, who will liaise directly with the class teacher(s). A Visitor Request Form must be completed and submitted at least 7 days in advance of the intended visit. Student guests would normally be welcomed for one day only so as to minimise disruption to teaching and learning.

Section 2: School Life

Student Leadership

The Primary Student Leadership Group (Grades 2–5) meets regularly to get involved in how the school operates, to provide ideas for improvements and leadership opportunities in the Primary Section of the school.

The Student Advisory Board (Grades 4–11) works with the school Director to develop strategic areas of the school. The Board comprises one student (and a substitute member) per grade level, Grades 4–11.

In the Secondary School the students elect a student council that represents the Grade 6 – 12 student body.

Our Secondary School Student Ambassadors are representing the school at events, e.g. Open House, and mentor new students starting at DIS.

Home Learning

Home learning in the Primary School at DIS

- Supports lifelong learning as part of our DIS mission to create self-sufficient individuals and the DIS definition of learning at www.dresden-is.de under 'Discover'
- Promotes learner agency and is accessible for all learners
- Is optional and therefore supports a balance between home and school life
- Complements and reinforces school learning
- Acknowledges that learning also happens outside of school and through a variety of activities

Independent Reading, Reading Together, Listening to Reading

Reading for pleasure has consistently been proven to have a large impact on learning and academic achievement across all subject areas. In the Primary School we encourage and support a culture of reading and are advocates for the International Reading Association's 'Right to Read' declaration (<https://www.literacyworldwide.org/docs/default-source/resource-documents/the-case-for-childrens-rights-to-read.pdf>). Reading is an act that promotes learning and growth. It is expected that each student is engaged in reading every night.

Home Language Learning

As a diverse, international community, our students are multilingual, often speaking more than one language. At DIS, we acknowledge the importance of home languages as the foundation of all other language learning. Families play a crucial role in maintaining and developing a student's home language. Students often need extra opportunities to practice, consolidate and extend their home language.

- Additional support for home learning in German will be provided by the German teachers in consultation with families.
- We encourage families who have home languages other than German to also seek learning opportunities to support their children at home.

Home learning in the Secondary School

At Dresden International School we recognize that home learning is a valuable part of school education as it allows for practising, extending and consolidating learning done in class. It also enables students to develop essential self-management skills (organization of time and tasks) and affective skills (practicing focus and concentration, overcoming distractions, perseverance and persistence, and practice in delaying gratification). Home learning requires the partnership

of school and home, which is underlined by clear communication in both directions. Home learning should always contribute to balance in a student's life, enabling them to become independent learners capable of managing anxiety and stress and never at the expense of overall health and well-being. Students in Grades 11 and 12 will expect to have on average 2–3 hours of homework per day. IBDP students will be expected to work over the weekends and during school holidays. Students are encouraged to record home learning tasks and their due dates either in a paper diary or using an online app.

Student Support Services

The Student Support Services Team exists to support students through their educational career at the Dresden International School and to foster a culture of inclusion. We provide counseling, special educational services, and English as a second language support to students identified as having specific needs. Our goal is to assure that all students are able to achieve their highest level of success at our school.

Counseling

The counseling department aims to support all students through their education at DIS by addressing personal, social, academic, and career skills needed to achieve success while at DIS and beyond. This aim will be realized by providing a confidential and safe environment for students to receive individual and group counselling, referring students to outside resources as required, advocating for students' well-being, supporting the healthy transition of students to and from DIS, assisting in the teaching and implementation of a school wide guidance and pastoral programme, providing support and assistance to parents, and fostering a school community that is educated about the students' emotional and social needs.

Learning Support

DIS recognizes that students with learning differences need support in gaining the skills and knowledge necessary to access the school curriculum at an age appropriate level. Students who enter school with a learning diagnosis or who are referred by parents or staff members will receive a learning support plan that is developed in collaboration with parents, the student, teachers, and outside professionals. Within the limits of financial and staffing resources, DIS can offer students who have been diagnosed with specific learning disabilities, physical and sensory differences, and mild developmental disorders support in one or more of the following models: in-class support and accommodations, small group direct instruction, and pull-out intervention.

English as an Additional Language (EAL)

The EAL programme exists to ensure that students arriving at the school without or with limited knowledge of English are supported during their acquisition of English or further development of academic language skills. The aim of the programme is to develop the student's knowledge of social and academic English to the level at which they are able to participate in all aspects of the life of the school, to access the curriculum and to achieve their potential. The language programme is adapted to the age and the needs of the student.

DIS Counseling Services

The counseling programme at the Dresden International School focuses on three areas:

- **Personal Counseling** is for students who are having difficulty coping with their personal and social lives. Personal counseling focuses on helping students gain the skills and confidence necessary to handle their difficulties.
- **Academic Counseling** focuses on promotion of student success at school. Students work with counselors to increase organizational skills, peer relations and approaches to learning.
- **University and Career Counseling** are offered to help students prepare for, choose, and apply to post-secondary education. Exploration of skills and career choices is an important part of this counseling process.

The Role of the School Counselors

The counselors offer information, consultation, and support to the school community as well as individual and group counseling for students and families. The counselors implement a comprehensive school counseling programme that promotes and enhances student learning and achievement.

The counselors are available for consultation to teachers and parents as well as assisting in accessing services in the community. The counselors also work with teachers to increase the overall well-being of students in the school by educating about social, emotional and psychological health and creating a transition programme for incoming and leaving students.

Consultation

Parents may choose to contact the counselor about:

- Major changes in the family such as a move, illness, death, divorce, or family crisis
- Family difficulties or concerns
- Concern for their child's well-being
- To discuss a child's special needs
- To consult regarding community agencies and referrals

Careers and College Counseling

The Careers team works with the secondary students to offer college counseling and careers advice. Information about events and opportunities are posted by the careers team in a Google classroom specifically dedicated to careers for students in Grades 9 and 10 and via the 'core' Google classrooms for students in Grades 11 and 12.

Careers and universities information sessions are offered as part of our Extended Advisory programme and includes guest speakers. Students in Grades 9 and 10 can also research courses and careers by registering with Unifrog and BridgeU. These online career databases allow students and parents to explore career options and shortlist university courses.

There is an annual Careers Day held for students that is focused on careers and university applications and we also hold information sessions for parents at least twice a year.

Grade 12 support for university applications is ongoing and regular. DIS offers guidance for universities in Germany and Austria, including the process of achieving German recognition of their IB diploma as equivalent to the Abitur as well as supports the students applying to other countries.

For students interested in studying in the US, the careers team organizes ACT Prep Workshops, if needed, in September and October. DIS is an authorized test center for the ACT, holding three

tests per school year. Further, DIS is also a registered test center for the various entry examinations used by some universities in the UK.

We also offer advice and support to our alumni that may have taken a gap year following their education at DIS and apply to universities the following year.

Transition Services

As an international school, we have a mobile community. The process of changing schools and countries can be overwhelming, and students, staff and families can encounter culture shock, language barriers and feelings of isolation. To better assist our students in this process, the Counseling Department also provides services which help students' transition into and out of our school. This includes a new student and parent orientation, a parent orientation in the primary and secondary school and exit counseling available for all students. Providing time for reflection, opportunities to say goodbye, and a chance to look ahead is important in creating a positive and healthy transition. Parents are encouraged to contact the counselors for more information on transitions and culture shock, or if they feel their child is experiencing difficulty transitioning into or out of DIS.

Our transitions services additionally include support and services with the changing expectations, requirements and responsibilities within our school's IB programmes. Preparations for transition include moving from the Primary Years Programme (PYP) into the Middle Years Programme (MYP) and from the Middle Years Programme into the Diploma Programme (DP).

After School Care

After School Care (ASC) is provided for primary students if needed. ASC is located at both the Preschool Campus for G18 students, and at the School Campus for Grades K5 to 5.

Structured programmes at the School Campus begin after school has finished and end promptly at 18:00. Preschool children and students from K5 to Grade 5 receive after school care free of charge.

It is extremely important that students check out with the ASC Staff before leaving.

Offices can be contacted via the following telephone numbers:

- School Campus: 0351 44007 0 (reception) or 44007 25 (for ASC direct line) or mobile phone number 01522 93 41 547
- Preschool Campus: 0351 3125 416

Holiday Care Programme

During school holidays and teacher in-service days childcare is offered for all students at Preschool and the School Campus, up to and including Grade 4. Holiday Care is not available during the Christmas holiday and national holidays (*Feiertage*). Preschool is closed two weeks before school starts in August.

Holiday Care takes place each day at the Preschool Campus from 7:30 until 18:00 (during summer break until 17:30) and the School Campus from 8:00 until 17:00.

Children in the Preschool and in the K5 classes at the School Campus are provided with Holiday Care free of charge. Students of Grades 1–4 will be charged an additional cost.

School Libraries

DIS has three libraries: the PYP library for children in K5–Grade 5 and a library (Heribert Heckschen Center) for Secondary School students, both at the School Campus and the Preschool library at Goetheallee 18. Students use the learning resources in the libraries during class time but are also encouraged to check out materials for research or to read at home. Through donations and school purchases, the libraries have acquired 45,000 volumes, including online subscription databases. The libraries are open to students during school hours. DIS welcomes donations of books to develop its collection of books in students' native languages.

Computers

All computers, including those in the classrooms, are fully networked with supervised Internet access. Students enrolled in the PYP are not allowed to use school computers without adult supervision. Further, DIS has IT Acceptable Use policies which specify the important ground rules that students must follow when using computers, IT services and IT equipment. The policies can be accessed at the student portal and with the Admissions Coordinator.

Physical Education (PE)

Preschool students at the G18 campus have a special room for Physical Education. In warm weather months, PE classes are often held in the adjacent Waldpark. The 3- to 5-year-old students have two days of PE per week. The 1- to 2-year-old students have one day of PE per week. PE classes are in addition to free play recess periods.

Some of the PE lessons in the Preschool and Primary School are taught in German to support German language acquisition.

For PE classes at the School Campus, DIS students use the sports hall. If DIS students are using another facility for sports, the school provides a bus shuttle to the sports facilities and back. Local swimming pools, ice-skating rinks and tennis courts may also be used from time to time for PE classes.

PE Uniforms

At DIS all students (at School and Preschool Campus) need to wear the mandatory uniform for Physical Education (including indoor and outdoor sports shoes).

1. Any black or grey sport pants or shorts

- PE shorts/ pants must have an elastic waist and be modest and appropriate for sports

2. Any non-marking sport shoes

- No sneakers or street wear shoes
- Athletic/running shoes are required

3. DIS PE T-Shirts (navy blue)

- Students, who need to wear long-sleeve t-shirts for religious reasons, will be able to order an appropriate shirt.

4. Jacket

- DIS Physical Health Education Jacket
- Alternatively: long sleeve shirt/ jacket which can be worn under the DIS PE t-shirt

To order the uniform (t-shirt and jacket), please find here more information about the pricing at: school website under 'Learn' > 'Secondary School' > 'Sports'. Students are required to change

at the end of PE class each day. Owning several shirts to use on alternating days is strongly encouraged. Students are not required to change into uniforms for co-curricular activities but are required to wear athletic/running shoes.

Athletics Programmes

Dresden International School sports programmes promote sportsmanship, commitment and teamwork within students outside of school hours. Our athletic programmes host an array of team sports throughout the school year.

The following activities take place during the school year: Cross Country, Volleyball, Soccer, Badminton, Swimming, Basketball. Student athletes have the chance to participate locally in the community but also within the German International School Sports Tournaments conference (GISST): Cross Country, Volleyball, Soccer, Badminton, Swimming, Basketball, and Tennis.

DIS has been a member of GISST since 2003. GISST consists of 12 international schools around Germany. Each member school hosts one to two tournaments a school year with over 80 participating students competing in each tournament.

GISST gives students a safe tournament environment to compete against other international school teams within the conference, and also provides an opportunity for students to integrate socially. Details of events can be found at www.gisst.de.

Co-Curricular Activities

As an international day school, we offer our students a daily complementary educational and recreational programme from 15:15 to 18:00, in addition to their regular school programme. Students can choose from a wide range of pursuits including the Duke of Edinburgh Award, dance, writing, debating, hiking, yearbook, cooking, theatre, and chess.

Depending on their personal interests and experience, the co-curricular programmes provide students the opportunity to try out activities, acquire new knowledge and develop already existing abilities. Our central task is to strengthen personal growth, to encourage learning and to promote exchange and collaboration between students. It is particularly important for Secondary School students to take part in co-curricular activities, to ensure that they learn to use their free time constructively and to provide balance in their busy lives.

We believe in promoting a healthy balance between work and family, and we wish to support all of our students in achieving this. Most co-curricular activities are offered for free. It may be necessary to charge for activities that are led by an external provider, or for aspects of a particular club that involve travel or tournament fees.

Section 3: Parent Involvement at DIS

Parent Council

The Parent Council is a group of parents elected by all parents in the school to represent their views. The election takes place at the beginning of every school year. Each grade level including the Preschool is represented by a Parent Council representative and a deputy. The Parent Council presents parents' interests and concerns to the school and ensures parent perspective is communicated and considered. It maintains clear, structured and regular communication between school leadership and parent body. The Parent Council also supports transparency and trust between school and parents.

Contact the leadership team by sending an email to disparentcouncil@gmail.com.

Fundraising Association

The school is also supported in their work by the Fundraising Association (*Förderverein*). The members organize fundraising events and develop creative projects to ensure the financing of important school projects. In addition, the Fundraising Association identifies donors and sponsors and relies upon the active support of parents for this.

The Fundraising Association is composed of parents and representatives of the Dresden business and academic communities. The board members for 2023/2024 school year are: Frank Schleicher (Board Chair), Antje Assmann, Prof. Dr. Michael Beitelschmidt, Jane Dietrich-Schendel, Thomas Richter and Dr. Katharina Schwanitz.

More information on the Fundraising Association is posted regularly in our newsletter or online on the school's website (under 'Community'). If you wish to contact the members of the Förderverein please email: foerderverein@dresden-is.de.

Community Network Facebook Group

Join the closed Facebook group page ([DIS Community Network](#)) where DIS parents can connect with each other.

Volunteers and Parent Partnership

DIS benefits from the great support of its volunteer community. Parent volunteers are a very important part of a successful school and volunteers are needed in every capacity, big or small, English, German or other languages, both in and out of the classroom.

Regular volunteer positions are available in the school garden or in the classrooms (e.g., Room Parents or read-aloud volunteers) and for special projects. Please contact the school office, your child's teachers or the grade level parent for your child's class if you are interested in becoming a volunteer at DIS.

Community Room & Parent Library

The Community Room in Building B on the School Campus is a place parents can come together.

The room is equipped with a TV, DVD player, fridge, kitchenette as well as a parent library. Parents are very welcome to borrow books, which may be checked out via the secondary library.

If you are interested in booking the room for a parent meeting, please send your request to communityroom@dresden-is.de.



**DRESDEN
INTERNATIONAL
SCHOOL**

**DRESDEN
INTERNATIONAL SCHOOL
School Campus
(grades K – 12)**

Annenstr. 9
01067 Dresden
Phone +49 351 44007 0
Fax +49 351 44007 23

**DRESDEN
INTERNATIONAL SCHOOL
Preschool Campus
(age 1 – 5)**

Goetheallee 18
01309 Dresden
Phone +49 351 31254 16

info@dresden-is.de
www.dresden-is.de



AUTHORISATION



Founded in 1885



ACCREDITATION



MEMBERSHIP