

INSPIRE.

MOVE FORWARD.

GIVE BACK.



Welcome to our INFO EVENT!

Grade 1 - 12

Herzlich willkommen!



Please mute your microphone. Event starts in a few minutes. Bitte Mikrofon auf stumm schalten. Veranstaltung beginnt in Kürze.

World Citizens Made in Dresden



DRESDEN
INTERNATIONAL
SCHOOL

Agenda

DIS Vision & Mission
Facts & Characteristics

Primary School

(Grade 1-5)

Secondary School

(Grade 6-12)

Admissions Process

Q & A

DIS Mission

Our Mission Statement

We are a diverse community that empowers innovative and collaborative learning. As learners, we are prepared to be multifaceted, self-sufficient individuals who contribute to society.

Our Vision

Inspire. Move forward. Give back.

Our Values



COMPASSION



COMMITMENT



INTEGRITY



OPEN-MINDEDNESS

DIS High Quality Learning

Learning is a dynamic process of engagement and growth, which advances our conceptual understanding, knowledge, skills and dispositions in authentic ways.

Global Citizenship Education at DIS

- A transformative and life-long process promoting authentic engagement with local and global issues
- Learners devise solutions and take sustainable action using self-reflection, empathy, and systems thinking

Facts about DIS

500 Students from 55 Nationalities



- All-day programme for K-12 including Preschool
- IB World School - International Baccalaureate (IB)
 - > Three interrelated IB programmes that promote international thinking and tolerance
 - > interdisciplinary concept
- Accredited by the New England Association of Schools and Colleges (NEASC) and Council of International Schools (CIS)
- English as language of instruction, colloquial language
- Small classes, max. 22 students

Facts about DIS

- No cancelled classes
- Phone-free school (using YONDR Pouches)
- Co-curricular activities in all school sections
- Special support teachers, counsellors and career counselling
- Qualifications are recognized worldwide, including Germany
- School caterer: Gourmetta

Our School Campus

Annenstr. 9 (in the heart of Dresden's Old town)



Building A

- Classrooms for Grades 6-12
- Administration



Building B

- Classrooms for Grades 1-5
- Special subject classes for Grade 6-12
- Libraries
- Cafeteria



Sports Hall

For all grades

School Campus



What sets DIS apart?

All-day programme for Grades 1 to 12

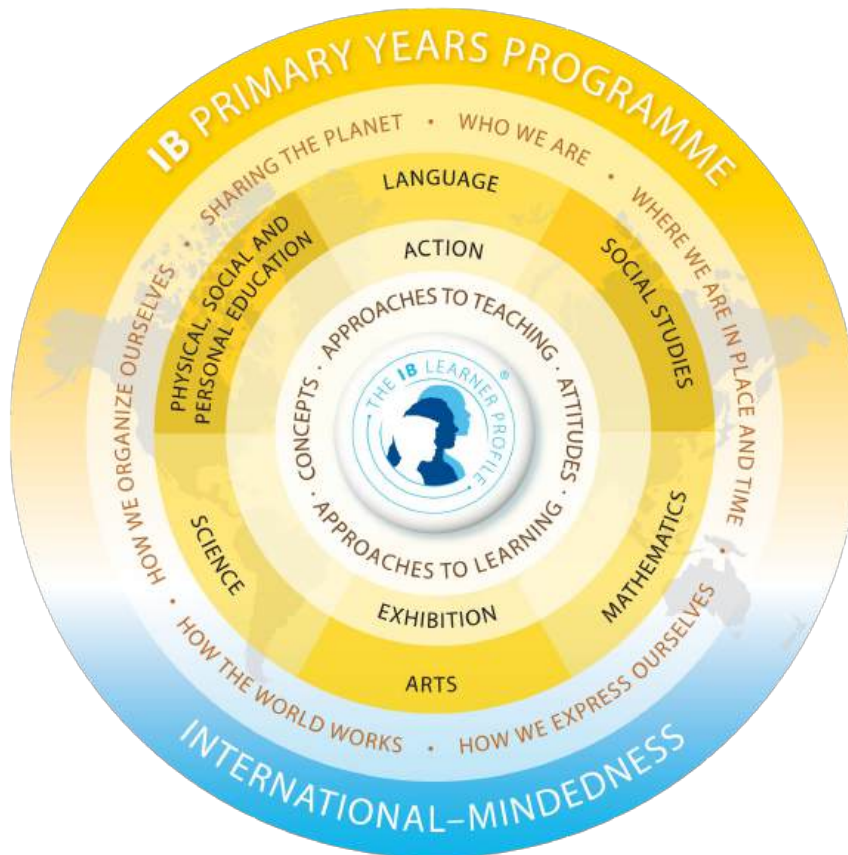
- Responsible and open-minded students
- Enjoy learning > see learning as a lifelong process
- Individual support of the students in learning and language acquisition
- Focus on creative and critical thinking, problem solving and the ability to communicate competently with others
- Teach students to think and act in international contexts
- Knowledge and social skills that help students make progress in a globalized and constantly changing society
- Best learning environment

Grades 1-5
Primary School

A Day In The Life Of A Primary Student

A DAY
IN THE
LIFE OF

IB Primary Years Programme



- Student-centred
- Inquiry-based framework for learning that focuses on collaboration, creativity, and skill development
- Balanced programme of learning that includes 6 subject areas (Mathematics, Language, Science, Social Studies, Personal, Social and Physical Education, the Arts)
- Focus on the whole child

Primary School

Grades 1-5

- School Times: 8:30 - 15:15 / Tuesday early dismissal at 14:45 and Wednesday late start at 8:45
- Subjects:

English	Math	German	Music
Visual Arts	Units of Inquiry	Performing Arts	Physical Education

- Units of Inquiry include the subjects Science, Social Studies etc.
- Swimming up to Grade 5

Timetable (Example)

Grades 1-5

Time	Monday	Tuesday	Wednesday	Thursday	Friday
Attendance 8:20-8:30	Homeroom				
Period 1 8:30 - 9:15	Writing	Reading	8.40 start	Reading	Writing
Period 2 9:15 - 10:00	Math	Math	Math	Math	Math
10:00-10:30	Break G3-5 Eat 10-10:15, Play 10:15-10:30				
Period 3 10:30-11:15	Unit of Inquiry	Writing	Drama	Writing	German
Period 4 11:15 - 12:00	Unit of Inquiry	German	Music	Writing	Drama
12:00-12:30 12:30-12:55	Lunch				
Period 5 13:00-13:45	Word Inquiry	Music	Unit of Inquiry	Sport	Library
Period 6 13:45 - 14:30	German	Unit of Inquiry	Word Inquiry	Sport	Art
Period 7 14:30 - 15:15	German	Early Dismissal	German	Unit of Inquiry	Reflection time Seesaw

Primary School

Grades 1-5

- Final project in Grade 5: PYP Exhibition
- No grades, instead continuous assessments and feedback, plus report cards
- Small classes to encourage individual support (avg. 18 students per class)
- Qualified international educators committed to the success of our students (counselling, additional language and learning support, student well-being coordinator)



Languages

English, German, Home Language

ENGLISH

- Language team supports students new to learning in English; work in collaboration with homeroom teachers to support learners with no or little English language knowledge
- Support in small groups or individually in classroom

GERMAN

- German as Additional Language
- German Home Language
 - > German classes encourage the continuous learning of home language while learning in English environment

HOME LANGUAGE

- We encourage and support students in learning their home languages

Close Communication

with parents

- Parent Teacher Connection Meetings (August)
- Parent-teacher conferences (fall)
- Student-led conferences with homeroom teacher and parents (spring)
- Appointments with teachers can be made at any time
- Report cards (February & June)
- Can provide a “Bildungsempfehlung” in Grade 4



Use of Technology in the Classroom

- Chromebooks for daily use available in Grades 3 - 5
- Laptop cart und iPads available for Grade 1 and 2
- Integration of learning platform: Seesaw (Grades 1 - 2), Google Classroom (Grades 3 - 5), IXL programme
- Supported by Digital Learning Coordinator



Library

- For students K5 - Grade 5
- Different library activities for all grade levels
- Librarian is working closely with class teacher



Good to Know

- Morning Care starting at 7:00
- After School Care until 18:00
- Co-Curricular Programme (e.g. Soccer, Show Dance, Coding Club, Sewing)
- Holiday Care offered
- Many field trips throughout the year
- Class trips



Grades 6-12
Secondary School

A Day In The Life Of A Secondary School Student

A DAY
IN THE
LIFE OF

Secondary School Overview

- School times: 8:20-14:45/15:45
- Spanish from Grade 6
- “Bring Your Own Device” from Grade 6
- Student support programme including:
counsellor, learning specialist team, careers counselling
- Various after school activities for all grade levels
- Mobile devices (e.g. phones, airpods) kept in a YONDR pouch during the day



Secondary School

Grades 6-12

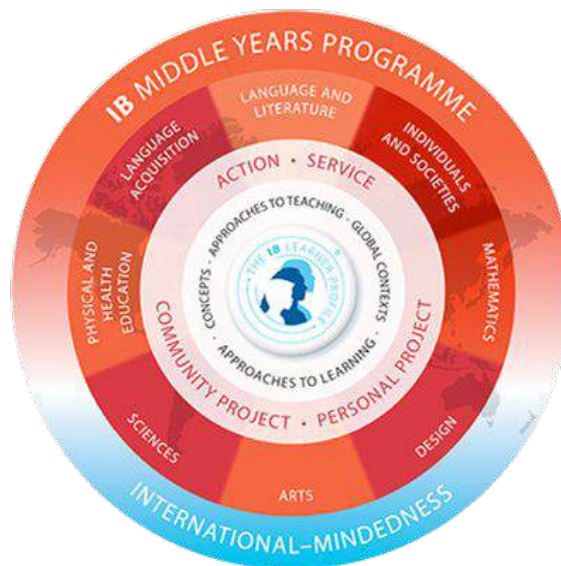
- Holistic education: academic, social and personal
- Assessment throughout is criterion referenced and feedback is offered on an ongoing basis
- Can respond to students' individual needs because of small classes, support from guidance teacher, school counsellor and special needs teacher
- All care is taken to ensure that student study choices allow them to fulfill the requirements of the *Realschulabschluss* and the *Abitur* if needed.



Grades 6-10
Middle Years Programme

Middle Years Programme (MYP)

A curriculum that encourages young people to connect academic learning with the world around them. Content and skills are explicitly taught as well as the conceptual basis underpinning all learning. This allows young people to understand the 'why' as well as the 'what' of their learning.



Learn how to learn
Intercultural understanding
Conceptual understanding
Concepts - big ideas
Learning in context
Community service
Creative, critical and reflective thinkers

Grade 6-10

Middle Years Programme

- Subjects we teach:

English

Math

German

Music

Visual Arts

Sciences

Performing
Arts

Physical
Education

Spanish

Design &
Technology

Individuals
& Societies

Grades 6-10

Languages



- English as Additional Language is available for beginners and extra support is provided for learners who need help with academic English.
- Student Learning Support team provides specialist help for a range of student needs.
- German and English is offered at home Language level, or as an additional language depending on students' level of experience.
- German speakers are encouraged to study German at a high level and to continue to use their German at home, as it is through mother tongue that high level conceptual thinking can take place.
- All students learn a third language, Spanish or their home language.
- We support students in learning their home languages.

Grades 6-10

Middle Years Programme



- Tailored programme for social and emotional balance and approaches to learning
- Personal Project and Community Service are an important part of the MYP
- Field trips help students to connect their classroom to the world around them (day trips and residential field trips)

Grades 11-12 Diploma Programme

Grades 11 and 12

Diploma Programme



- Students have the opportunity to undertake either the full IB Diploma Programme or a modified version which leads to the High School Diploma.
- Study SIX courses > Students select one subject from each group, choosing **three** at higher level and **three** at standard level.



Broad Rigorous Assessment
Reflection Inquiry Balanced
Community Service
Flexible
Critical Thinking
Develops Research skills
Choice within structure
Pre-university

Grades 11 and 12

Diploma Programme



- Additionally:
 - Extended Essay
 - Creativity, Activity, Service (CAS Programme)
 - Theory of Knowledge (a course in critical thinking)
- Programme can be modified depending on student's academic needs and future study pathways.

Qualifications

Recognized worldwide, including Germany

IB Diploma

- Obtained at the end of Grade 12
- recognized as German *Abitur*

DIS High School Diploma

- Grade 12 (Possible to studying anywhere that recognizes this US-based qualification (USA and some universities in Europe))
- Recognized as *Realschulabschluss*

MYP Certificate

- Obtained at the end of Grade 10
- Recognized as *Realschulabschluss*

Results IB Exams

Class of 2024 > 34 IB Candidates (31 Graduates)

DIS Success Rate = 91 %

worldwide success rate = 80 %

DIS Average Points = 33 (von max. 45)

worldwide average = 30

Highest Points Achieved: 45 von 45 (1.0 Abitur)

DIS Bilingual Diploma = 56 %

worldwide average = 28 %



Our Alumni attend universities around the world:

University Groningen (NL)

Oxford University (UK)

LMU München (DE)

University Rotterdam (NL)

Universität Edinburgh (UK)

Sorbonne Paris (FR)

Imperial College London (UK)

University Tokyo (JP)

St. Andrews University (UK)

Columbia University (USA)


Universität Wien (AU)

TU Dresden (DE)

Admissions Process

Admissions Process

Schedule a conversation and a school tour with our Admissions Coordinator to get to know the school and our programmes!

- 1) Submit the required documents (incl. photo, report cards, other documents)
- 2) Document review and forwarding to relevant school section
- 3) Interview with relevant School Principal (Primary or Secondary School)
- 4) Admissions tests according to age/grade
 - Preschool - Grade 5: cognitive, academic tests
 - Grades 6 - 12: German, Maths, English (where applicable, advanced English test - WIDA)
- 5) Decision is made within two weeks after the interview
- 6) Sign contract  **Welcome at DIS!**

School Fees

Depending on grade level

Registration fee: annually for the first three years at DIS **1.600,00 €**

	School Fee (school year)	Sponsoring Fee (school year)	Total School Year
Grades 1 to 3	1.800,00 €	10.920,00 €	12.720,00 €
Grades 4 to 5	1.800,00 €	12.020,00 €	13.820,00 €
Grades 6 to 10	1.800,00 €	13.125,00 €	14.925,00 €
Grades 11 and 12	1.800,00 €	14.255,00 €	16.055,00 €

Example School Fees

Depending on grade level

Example calculations for Grade 1

School Fee = 1.800,00 Euro

Sponsoring Fee = 10.920,00 Euro

Fee reduction is possible

Registration Fee = 1.600,00 Euro*

Fee reduction is possible

Total= 14.320,00 Euro

*Registration Fee >> The first three years at DIS.

Fee Reduction

School provides financial aid for families who apply. Fee reduction is calculated individually based on household income.

Get to know us

Online Info Event: Preschool

26 November 2024; 18:30 - 19:30

Open House: Grade 1 - 12 (On-Site)

5 February 2025; 09:30 - 11:30 | 14:00 - 16:30

Online Info Event: Grades 5 - 12

4 March 2025; 18:30 - 19:30

Online Info Event: Grades 1 - 5

18 March 2025; 18:30 - 19:30

Q & A

Please ask your questions in the chat
or raise your hand.

You are welcome to make an individual appointment!



Ms Katrin Schreiber

ADMISSIONS OFFICER



ADMISSIONS[AT]DRESDEN-IS.DE



+49 351 44007 16